

Welcome

To listen in **Ukrainian** or **Russian**, please select:

- Interpretation > Preferred Language

Ласкаво просимо

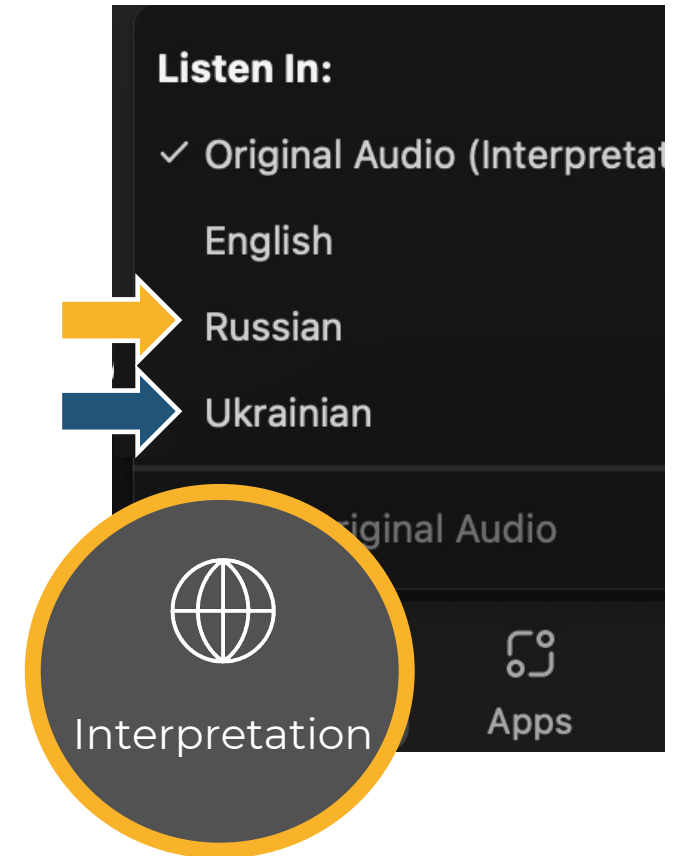
Для прослуховування українською або російською мовою, будь ласка, оберіть:

- Усний переклад
- Мова, якій надається перевага

Добро пожаловать

Для прослушивания на украинском или русском языке, пожалуйста, выберите:

- Устный перевод
- Предпочитаемый язык



Post-Secondary Education:

An overview of higher education in the US

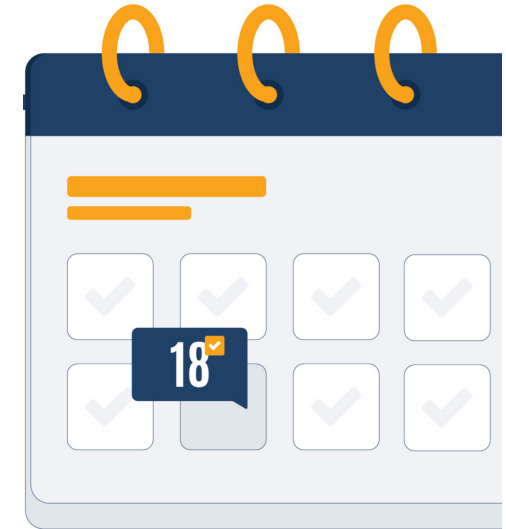
Ukrainian Support Sessions

Hosted by Solvera Consulting, in partnership with California
Department of Social Services' Refugee Programs Bureau



Upcoming Convening Sessions

- On Mondays, 10:00-11:00am via Zoom
- Through August 2024



| Date | Topic | Designed For |
|---------|---------------------------------------|--|
| June 24 | Education: K-12 | UHPs & Sponsors (*English, Ukrainian, Russian) |
| July 15 | Health: Stress and Wellbeing | UHPs & Sponsors (*English, Ukrainian, Russian) |
| Aug 5 | Navigating Critical Situations: Abuse | UHPs & Sponsors (*English, Ukrainian, Russian) |

Expectation Setting



Topics

- ✓ Public & Private Universities
- ✓ Community Colleges
- ✓ Financial Aid
- ✓ What to expect
- ✓ Degree Evaluation

Will receive PPT (in-language) + links after



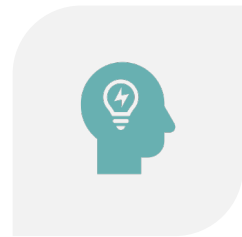
Not Covered

- x Personal details; All situations
- x Immigration statuses, scholarship opportunities
- x Tips for Applications and/or entrance exams
- x Enrolling in public benefits (CalWORKS, RCA, CalFresh, WIC)

Session Reminders



Mute



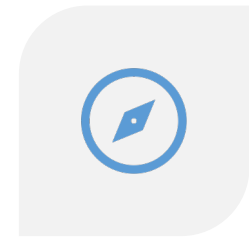
Select
preferred
language



Upvote
Questions



Live Q&As



Survey

Who you are hearing from today



Earthling Hub Approach



As educational first responders, Earthlings Hub offers free, student-centered, trauma-informed learning for children impacted by the war, while providing psychological assistance for parents and professional development opportunities for teachers for comprehensive support.

Our activities in numbers

Since the beginning of our operations in March of 2022, we experience a fast-growing demand for our services.

1500+

Children and adults served

3

Refugee camps connected

17000+

STEM Webinars participants and viewers

50+

Psychological support classes for parents and caregivers

210+

Scientists, teachers, and psychologists activated

3

Evacuated Orphanages connected

Today's Guest Presenter



Dr. Julia Turchaninova

- Professor, PhD in Education, MSc in Physics
- World-renowned educator with 40+ years of experience
- Education Without School and Parents' College Founder
- Leader of multiple international educational projects in the USA and Europe, involving hundreds of thousands of educators and students

Outline of Session Topics

1

**Available
Routes**

2

Resources

3

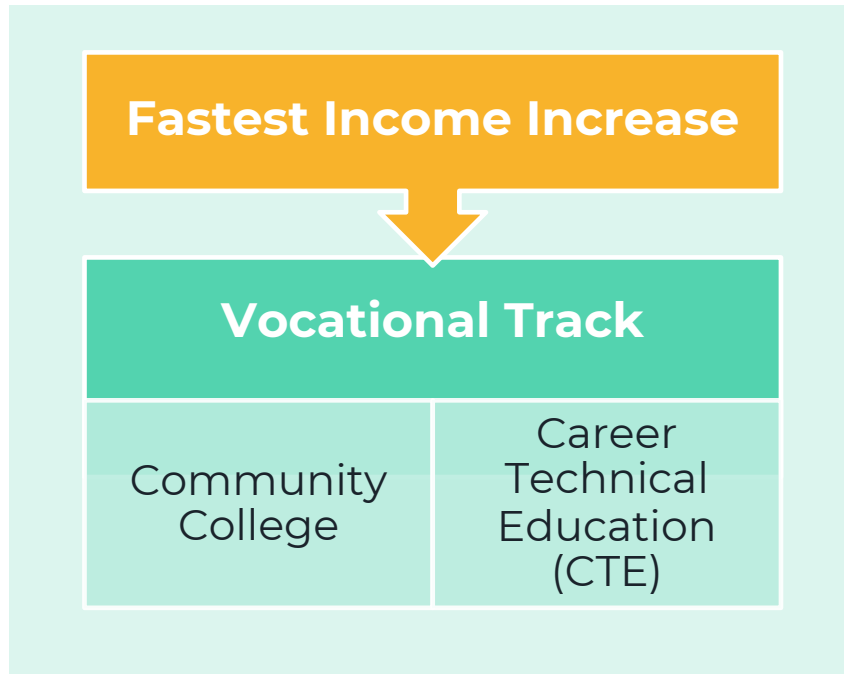
**Unique to
US Higher
Education**

4

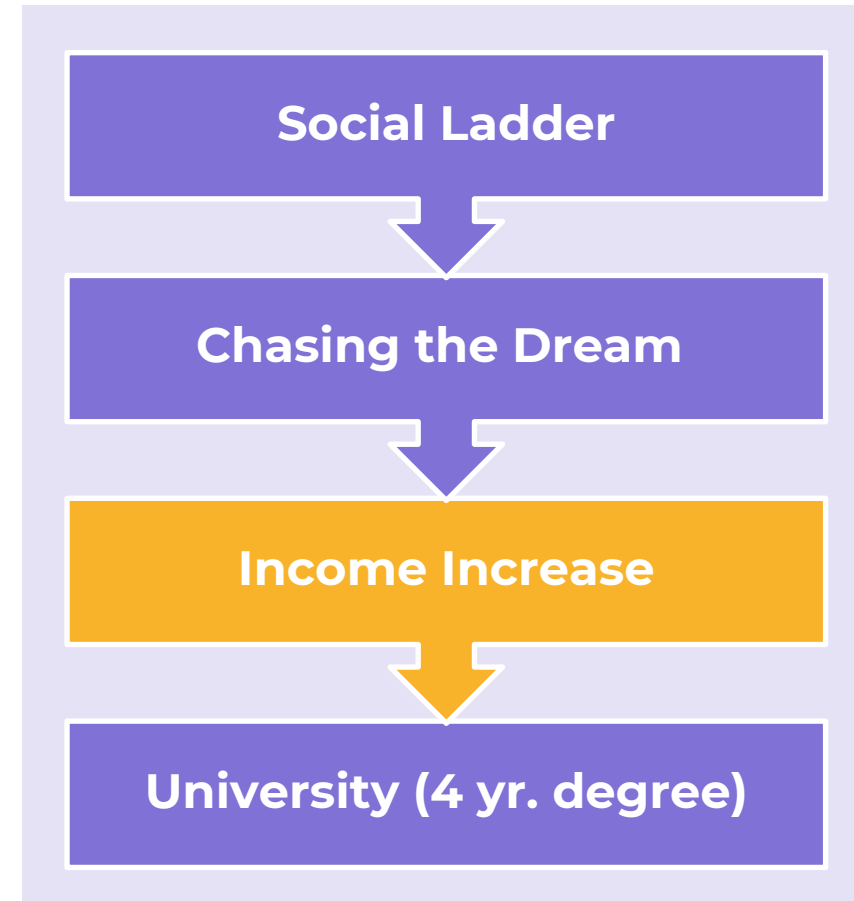
**Question &
Answer**

Identify Your Goal: **Why** or **What** for?

Short Term



Long Term



Comparison: Community College vs. University

| Benefit | Community College | University (UC/CSU) |
|-------------------------------|--|--|
| Cost of Tuition | Lower cost, ~ \$1,104 per year* | Higher cost, ~ \$13,000 - \$14,226 per year (UC)* and \$5,742 (CSU)* |
| Class Sizes | Smaller class sizes, more personalized attention | Larger class sizes, especially in lower-division courses |
| Flexibility | More flexible scheduling options | More structured schedule |
| Location | More local options, easier commute | Fewer campuses, longer commute |
| Transfer Opportunities | Easier transfer pathways to UC/CSU systems | Direct entry into upper-division |

Comparison: Community College vs. University, Cont'd

| Benefit | Community College | University (UC/CSU) |
|-----------------------------|--|--|
| Support Services | Extensive support for first-generation and low-income learners | Comprehensive support services, though may be more competitive |
| Degrees Offered | Associate degrees, certificates | Bachelor's, Master's, and PhD's |
| Career Preparation | Strong focus on technical and vocational training | Broader academic and research opportunities |
| Time to Degree | ~ 2 years for an associate degree | ~ 4 years for a bachelor's degree |
| Student Demographics | More diverse age range and part-time students | Younger, more full-time students |

Vocational Track: CTE



Career Technical Education

(CTE) is the practice of teaching *career specific skills* to students

The *Bureau Labor Statistics* **faster-than-average job growth** for [dental hygienists](#), [respiratory therapists](#), and [HVAC technicians](#).

Vocational Track: ORR Career Pathways Programs



San Diego

Oakland

Sacramento



Los Angeles

Receive federal funds to support eligible clients in:

- Developing career plans,
- Providing funding for:
 - Receiving vocational training,
 - Credential recognition,
- Higher-wage job placement assistance.

Vocational Track: Locate your nearest location



LOS RIOS
COMMUNITY
COLLEGE DISTRICT



SAN DIEGO
COMMUNITY COLLEGE
DISTRICT



**South
Orange
County**
Community
College District



NORTH ORANGE COUNTY
COMMUNITY COLLEGE DISTRICT

<https://www.cccco.edu/>

Vocational Track: Community College Example



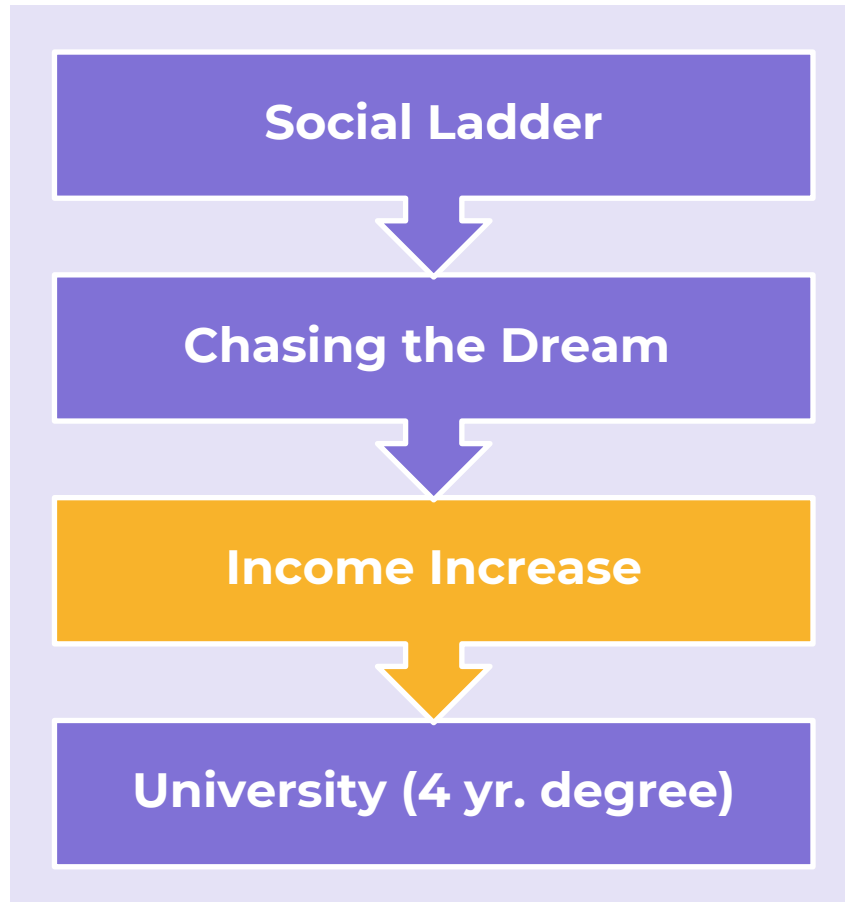
Cost* for Full Time (12 Credits):

\$2 173 - \$7 256 USD per year

***Residents who makes less than \$80 000/ year**
may qualify for free tuition

Site: <https://baccc.net/colleges/>

Long Term Pathway: Universities



Universities: Comparing Top CA Universities

| University | In-State Tuition & Fees | Grad. Rate | Median Salary (10 year) | Avg. Student Debt | Notable Value Factors |
|---|-------------------------|------------|-------------------------|-------------------|---|
| University of California, Berkeley | \$14,226* | 92% | \$71,200 | \$18,800 | High graduation rate, strong alumni network, high earning potential |
| UCLA | \$13,226* | 91% | \$69,500 | \$19,400 | High graduation rate, robust career services, prestigious programs |
| CSU Long Beach (CSULB) | \$6,846* | 74% | \$57,600 | \$15,500 | Affordable tuition, strong business and engineering programs |
| Cal Poly | \$10,194* | 79% | \$68,500 | \$17,200 | Focus on hands-on learning, high employment rates post-graduation |
| University of California, San Diego (UCSD) | \$14,733* | 87% | \$65,200 | \$18,900 | Strong STEM programs, research opportunities, coastal location |

Outline of Session Topics

1

**Available
Routes**

2

Resources

3

**Unique to
US Higher
Education**

4

**Question &
Answer**

Means to Goal: **Your Resources**

Actual Education Level

High school, bachelor's, master's, PhD

English Proficiency

From barely some to native speaker, reading, writing, typing

Time

Several months, 1-2 years, 4-6 years

Costs

your own, FAFSA, loans, scholarships, grants

Financial Aid: Scholarship & Grant Options



1. **FAFSA:** [Federal aid](#) for eligible noncitizens, including grants and loans.
2. **California Student Aid Commission (CSAC):** [CSAC](#) - State financial aid programs like Cal Grants and California Dream Act.
3. **University of California (UC) System:** [Financial aid](#) options for UC campuses.
4. **California State University (CSU) System:** [Financial aid](#) for CSU campuses.
5. **California Community Colleges:** [I Can Afford College](#) - Financial aid resources for community colleges in California.
6. **Fastweb:** [Fastweb](#) - Scholarship search engine for various opportunities, including noncitizens.
7. **Scholarships.com:** [Scholarships.com](#) - scholarship search engine.
8. **College Board Scholarship Search:** Search for scholarships and grants.

Financial Aid: Scholarship & Grant Options, Cont'd



9. **Institute of International Education (IIE):** [IIE](#) - Scholarships and support for displaced students and humanitarian parolees.
10. **Scholar Rescue Fund:** [Scholar Rescue Fund](#) - Financial support for refugee and displaced scholars.
11. **Refugee Education Assistance Program:** [Refugee Education Assistance Program](#) - Educational assistance and scholarships for refugees.
12. **California Community Foundation:** [California Community Foundation](#) - Scholarships and grants for Los Angeles area residents.
13. **San Francisco Foundation:** [San Francisco Foundation](#) - Scholarships and educational grants for Bay Area residents.
14. **EduMed Scholarships for Immigrants and Refugees:** [EduMed](#) - List of scholarships and grants for immigrants and refugees.
15. **Immigrants Rising:** [Immigrants Rising](#) - Scholarships and resources for undocumented and immigrant students, including humanitarian parolees.

Recommendations

Suggestions

- ✓ **Degree Evaluation:** if considered equivalent to a U.S. bachelor's degree = could disqualify you from receiving aid
- ✓ **ORR RCP Program**, if near one, go there first to see if you are eligible to enroll
- ✓ **Community colleges and vocational tracks**, ask about job placement supports, average post-completion wages, etc
- ✓ **Universities**, find student support groups
- ✓ **Goal is a 4-yr degree?** Start at Community College and transfer to University

Resources

- **CA Community Colleges:**
<https://www.cccco.edu/>
- **Refugee Career Pathway Programs:**
<https://www.acf.hhs.gov/orr/programs/refugees/refugee-career-pathways/grants>
- **Career OneStop Centers in CA:**
<https://www.careeronestop.org/LocalHelp/AmericanJobCenters/find-american-job-centers.aspx?location=California>
- **Map: UKR Service Providers**
<https://bit.ly/UHPmap>
- **Table: HAU Providers**
https://bit.ly/UHPlinks_FAQ

Outline of Session Topics

1

**Available
Routes**

2

Resources

3

**Unique to
US Higher
Education**

4

**Question &
Answer**

Differences Overview



- General Education Diploma
- Application Process
- Credits
- Resume versus CVs
- Licenses & Certificates
- References

Comparing: Higher Education in US vs Ukraine

| | United States | Ukraine |
|----------------------------------|---|--|
| General Education Diploma | High school diploma with broad education. | Secondary school certificate, more specialized. |
| Application Process | Standardized tests (SAT/ACT), essays, letters of recommendation, and holistic review. | Entrance exams specific to universities. Some require interviews or additional documents. |
| Credits | Credit system based on credit hours, Bachelor's ~120 credits. | European Credit Transfer and Accumulation System (ECTS) used, Bachelor's ~ 180-240 ECTS credits. |

Comparing: Higher Education in US vs UKR, Cont'd

| | United States | Ukraine |
|------------------------------------|--|--|
| Resume versus CVs | Resumes are typically one page, highlighting skills and experiences. | CVs used for job and academic applications, detailed and comprehensive. Resumes are less common. |
| Licenses & Certificates | Professional licenses/certifications are often required for certain fields (e.g., medicine, law, engineering), obtained post-degree. | Similar system, post-degree. |
| References | Letters of recommendation are a standard part of college and job applications. | References are required for job applications, but uncommon for university admissions. |
| Cost | High tuition fees, significant student debt. | Lower tuition fees, limited financial aid. |

Resources for Ukrainians



Find support

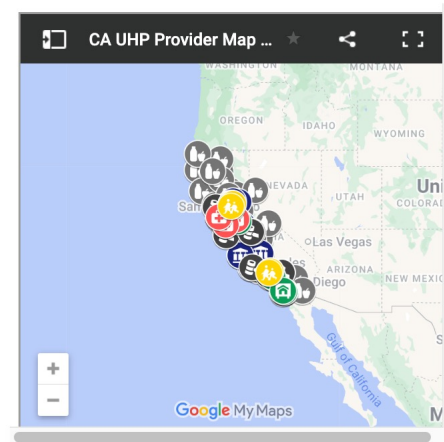
SupportGuide.org, a product of Solvera Consulting, connects refugees and providers across California to centralized information and resources.



Find Providers



Visit our curated GoogleMap to find resources in your area

Visit the Map



<https://bit.ly/UHPmap>

NAVIGATING LIFE IN CALIFORNIA for Ukrainain Newcomers



Register Here bit.ly/UKRinCA

Sessions occur on select Mondays at 10:00am - 11:00am PT. Resources are available at SupportGuide.org. Register once to attend any.

| | |
|-----------------|---------------------------------------|
| April 15 | Ukrainian Re-Parole Overview |
| April 22 | Getting Help in the first years |
| May 13 | Understanding Employment Programs |
| June 3 | Education: Post-Secondary |
| June 24 | Education: K-12 |
| July 15 | Health: Stress & Well-being |
| Aug. 5 | Navigating Critical Situations: Abuse |
| Aug. 26 | Employment: Career Pathways |

CDSS CALIFORNIA DEPARTMENT OF SOCIAL SERVICES

SOLVERA CONSULTING

support guide.org a project of Solvera Consulting

NOVA UKRAINE

<https://bit.ly/UKRinCA>

Outline of Session Topics

1

**Available
Routes**

2

Resources

3

**Unique to
US Higher
Education**

4

**Question &
Answer**

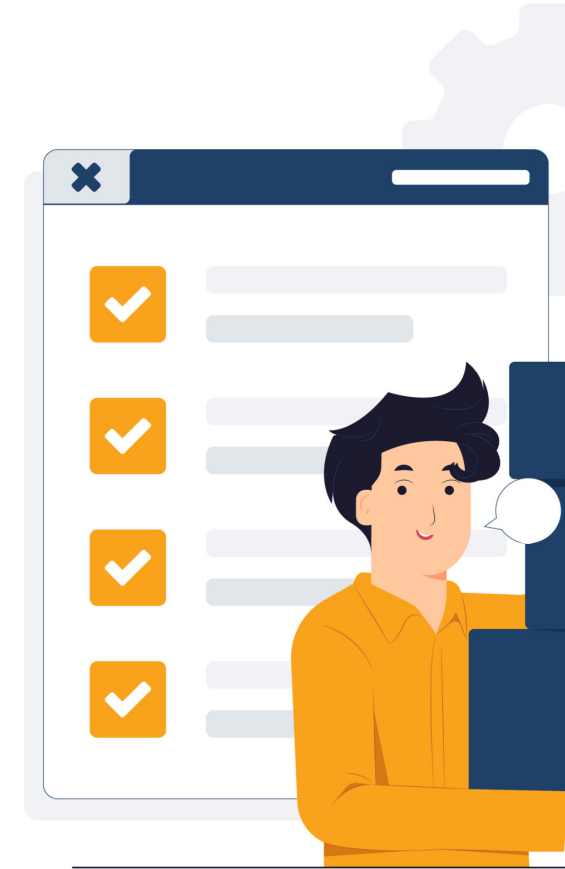
Question & Answers



Next Steps

After this session you will receive:

- ✓ Link to slide deck
- ✓ List of links
- ✓ Survey to provide feedback on today's session
 - Ask additional questions
 - Suggest future topics





Complete a **Feedback Survey** & Request **Future Session Topics**

Email the hosts: UHPinfo@solveraconsult.com,
RPBTTAU@cdss.ca.gov