

Welcome

To listen in **Ukrainian** or **Russian**, please select:

- Interpretation > Preferred Language

Ласкаво просимо

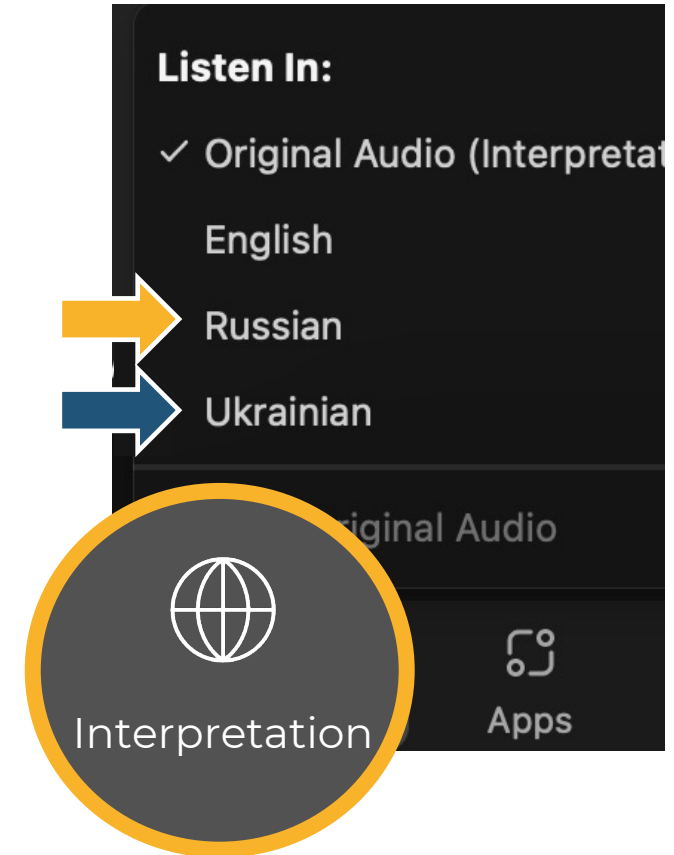
Для прослуховування українською або російською мовою, будь ласка, оберіть:

- Усний переклад
- Мова, якій надається перевага

Добро пожаловать

Для прослушивания на украинском или русском языке, пожалуйста, выберите:

- Устный перевод
- Предпочитаемый язык



Education: K-12

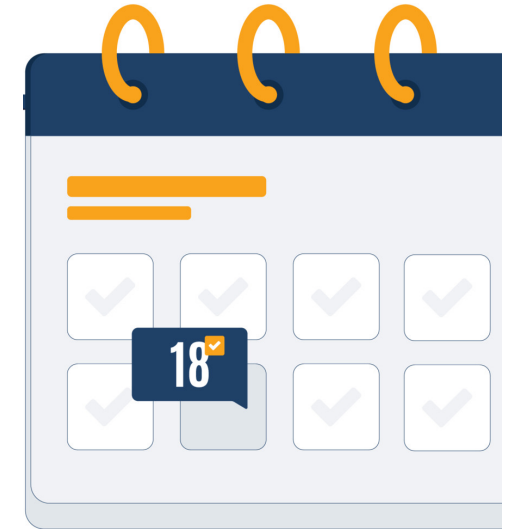
Ukrainian Support Convening Sessions

Hosted by Solvera Consulting, in partnership with California
Department of Social Services' Refugee Programs Bureau



Upcoming Convening Sessions

- On Mondays, 10:00-11:00am via Zoom
- Through August 2024



Date	Topic	Designed For
July 15	Health: Stress and Wellbeing	UHPs & Sponsors (*English, Ukrainian, Russian)
Aug 5	Navigating Critical Situations: Abuse	UHPs & Sponsors (*English, Ukrainian, Russian)
Aug 26	Employment: Career Pathways	UHPs & Sponsors (*English, Ukrainian, Russian)

Expectation Setting



Topics

- ✓ Accessing K-12 education
- ✓ School enrollment
- ✓ Education expectations
- ✓ Advocacy
- ✓ What to expect

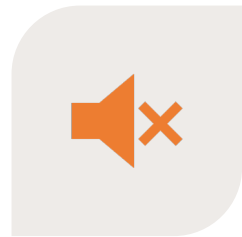
Will receive PPT (in-language) + links after



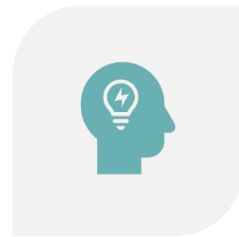
Not Covered

- x Personal details
- x All situations
- x Topics like immigration status, policies, and international education
- x Enrolling in public benefits (CalWORKS, RCA, CalFresh, WIC)

Session Reminders



Mute



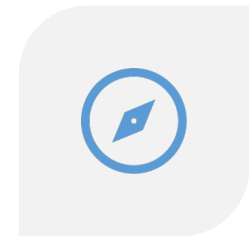
Select
preferred
language



Upvote
Questions



Live Q&As



Survey

Who you are hearing from today



Outline of Session Topics

1

**Outline of
Education
Choices**

2

**Enrollment
Processes**

3

**School
Expectations**

4

**Advocating
for your
child**

Education: Kindergarten-12th Grade (K-12)

State of California

Department
of Education

School
District

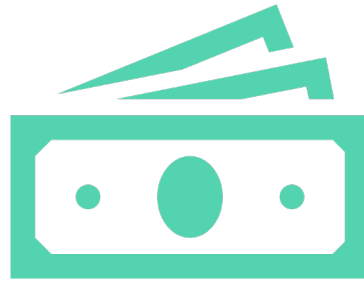
School

State of California Education Structure

Types of Education



Public



Private



Homeschool

When should your child **begin school?**

- Preschool is an option
 - 3 years old or older
- Kindergarten (K)
 - 5 years old on or before Sept 1 that year
- Primary education is K-12 grades



Transitional Kindergarten



What is transitional kindergarten?

- While Kindergarten typically admits children who turn five by a specific date, TK accommodates children who miss the Kindergarten age cutoff but will turn five during the academic year.

Kindergarten-12th Grade

- California law requires a child to be 5 years old on or before Sept 1 for Kindergarten
- Kindergarten
- Elementary School (1-5 grade)
- Middle School (6-8 grade)
- High School (9-12 grade)



Enrollment Process

Registering your child for school

Options Near You



Home / Resources / School Directory / Data Downloads / About the Directory

California School Directory

The California School Directory (Directory) contains information about California public schools, private schools (including nonpublic learn more), and county offices of education. Visit the [About the Directory](#) web page to learn more.

Great! SCHOOLS.org

Find Your School District and Nearby Schools

Locate nearby schools with your address or ZIP code. Use the map to find your district boundaries, assigned public schools and nearby school districts.

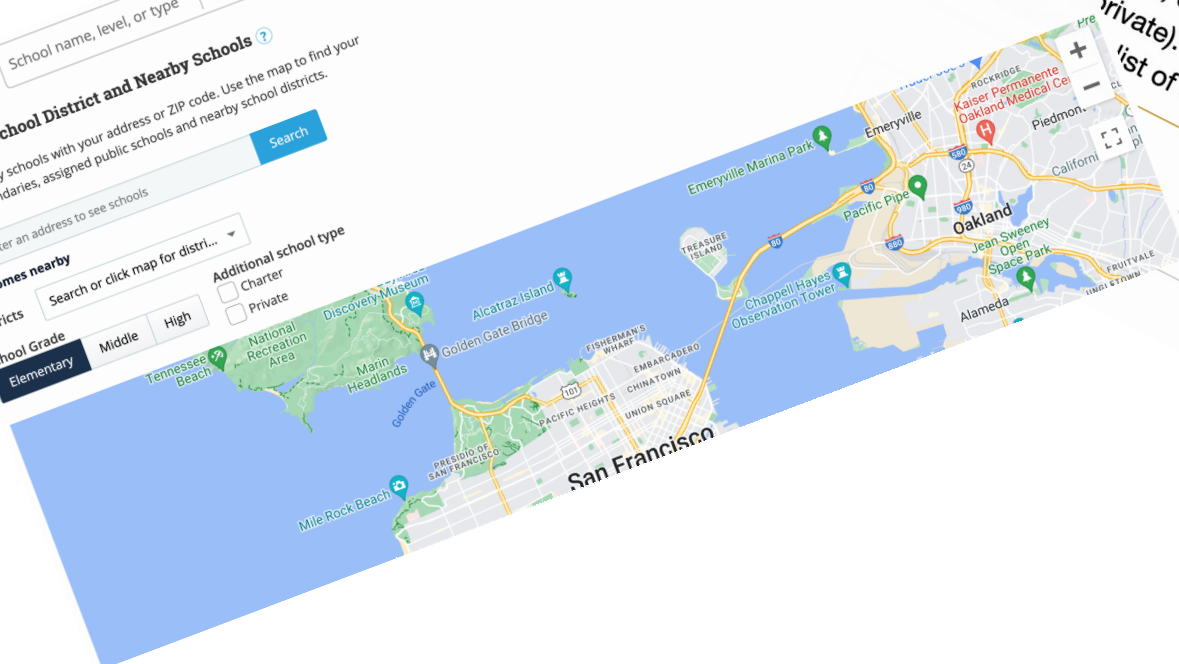
Search bar: School name, level, or type Los Angeles, CA

Homes nearby

Districts: Search or click map for district...

School Grade: Elementary, Middle, High

Additional school type: Charter, Private



Search

Advanced

Enrollment



- Identification
 - Contact info.
 - Sibling info.
- Emergency contact info.
 - Proof of residency
 - Proof of age (student)
 - Health record
 - Transcripts

Required Vaccinations

State of California—Health and Human Services Agency

Department of Health Care Services
Child Health and Disability Prevention (CHDP) Program

REPORT OF HEALTH EXAMINATION FOR SCHOOL ENTRY

To protect the health of children, California law requires a health examination on school entry. Please have this report filled out by a health examiner and return it to the school. The school will keep and maintain it as confidential information.

PART I TO BE FILLED OUT BY A PARENT OR GUARDIAN

CHILD'S NAME—Last	First	Middle	BIRTH DATE—Month/Day/Year
ADDRESS—Number, Street		City	ZIP code
		SCHOOL	

PART II TO BE FILLED OUT BY HEALTH EXAMINER

HEALTH EXAMINATION

NOTE: All tests and evaluations except the blood lead test must be done after the child is 4 years and 3 months of age.

REQUIRED TESTS/EVALUATIONS	DATE (mm/dd/yy)
Health History	/ /
Physical Examination	/ /
Dental Assessment	/ /
Nutritional Assessment	/ /
Developmental Assessment	/ /
Vision Screening	/ /
Audiometric (hearing) Screening	/ /
TB Risk Assessment and Test, if indicated	/ /
Blood Test (for anemia)	/ /
Urine Test	/ /
Blood Lead Test	/ /
Other	/ /

IMMUNIZATION RECORD

Note to Examiner: Please give the family a completed or updated yellow California Immunization Record.
Note to School: Please record immunization dates on the blue California School Immunization Record (PM 286).

VACCINE	DATE EACH DOSE WAS GIVEN				
	First	Second	Third	Fourth	Fifth
POLIO (OPV or IPV)					
DtaP/DTP/DT/Td (diphtheria, tetanus, and [acellular] pertussis) OR (tetanus and diphtheria only)					
MMR (measles, mumps, and rubella)					
HIB MENINGITIS (Haemophilus Influenzae B) (Required for child care/preschool only)					
HEPATITIS B					
VARICELLA (Chickenpox)					
OTHER (e.g., TB Test, if indicated)					
OTHER					

PART III ADDITIONAL INFORMATION FROM HEALTH EXAMINER (optional) and RELEASE OF HEALTH INFORMATION BY PARENT OR GUARDIAN

RESULTS AND RECOMMENDATIONS

Fill out if patient or guardian has signed the release of health information.

- Examination shows no condition of concern to school program activities.
- Conditions found in the examination or after further evaluation that are of importance to schooling or physical activity are: *(please explain)*

I give permission for the health examiner to share the additional information about the health check-up with the school as explained in Part III.

Please check this box if you **do not** want the health examiner to fill out Part III.

Signature of parent or guardian Date

Name, address, and telephone number of health examiner

- Diphtheria, Tetanus, and Pertussis (DTaP, DTP, Tdap, or Td)
- Polio
- Varicella (chicken pox)
- Measles, mumps, and Rubella (MMR)

[Report of Health Examination for School Entry Form](#)

Expectations and Norms

What to expect at your child(ren)'s school

School Schedule

- Academic school year is typically Aug/Sept – May/June
- Holidays and vacations
- Exams and testing
- Certain sports and activities can happen during certain times of the year
- Monday-Friday, AM-PM
- Different subjects and teachers
- Younger students tend to have one primary teacher until they get to middle school or high school



School Supplies

- Schools will provide textbooks and other learning content for students to borrow
- Students are expected to provide their own notebooks, pens, pencils, etc.
- Some field trips may be covered by the school or require permission and a small fee from the student's parent/guardian
- There may be some fees with school activities that are not part of learning curriculum
- School food programs and bringing lunch

School Attendance **Expectations**

- Ideal attendance - no missed days!
- The State of California considers ten days of absences for one school year, for any reason, excessive
- California truancy laws



Attendance and Truancy

Reasons for Excused Absence

- Student is sick
- Local health officer has issued a quarantine
- Attend immediate family member funeral service
- Jury duty
- Student is the custodial parent of a child who has a medical appointment or is sick
- Justifiable personal reasons approved by the school
- Serve as a member of a precinct board for an election
- Spent time with an immediate family member on active military duty
- Attend student's naturalization ceremony

Truancy Consequences



Parent Involvement

- Parent-teacher conferences
- Permission forms
- Report cards
- Attendance
- Additional supports
 - IEP
 - Counseling
 - Social worker



Advocating for Your Child

Escalating to have needs met

Individualized Education Plans (IEP)

- IEPs are the result of an educational assessment that determines that a child has significant learning challenges. Such a plan is made for children who are having difficulty learning in school, whether due to learning disabilities, developmental disabilities or emotional and behavior problems.



Assessments and More



- English assessments
- Teacher aides (bilingual)
- Learning disabilities
- Developmental disabilities
- Emotional and behavior problems
- Supports for child and guardians

Support for **Your Child**

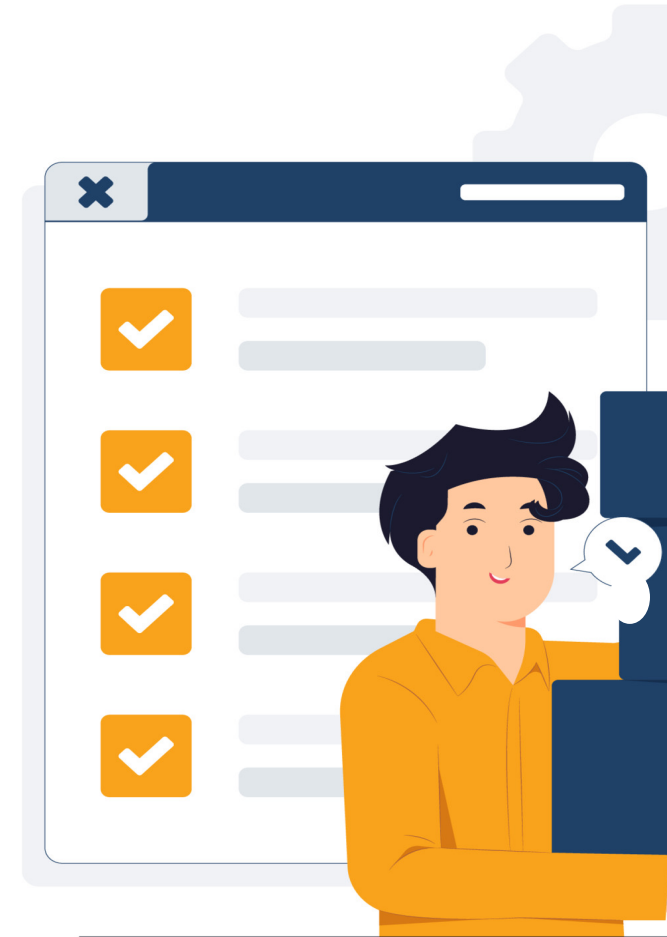
- Bullying/harassment or discrimination
- Child should be safe from adult abuse at school
- Counseling supports
- Equal access to education



Next Steps

After this session you will receive:

- ✓ The slide deck
- ✓ Referenced links
- ✓ Survey to provide feedback on today's session
 - Ask additional questions
 - Suggest future topics



Question & Answers





Complete a **Feedback Survey** & Request **Future Session Topics**

Email the hosts: UHPinfo@solveraconsult.com,
RPBTTAU@cdss.ca.gov